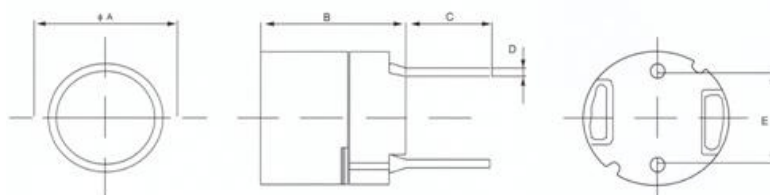


## DLCR Series

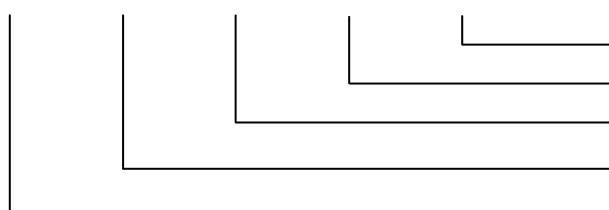
### ● Dimensions and Land Patterns. (UNIT:mm)



Type	ΦA	B(max)	C	D	E
DLCR664	6.50	6.50	4.0	0.50	4.0
DLCR875	8.30	7.50	5.0	0.65	5.0

### ● Part Numbering

**DLCR 664 - 101 M B**



Packaging Code: B: Bulk

Tolerance: K:±10% M: ±20% N:±30%

Inductance Value: 101: 100uH

Dimensions: 664 、 875

Product Type

### Electrical characteristics List

#### DLCR664 Series

PART No.	L (μH)	Tolerance	Test Condition	RDC Max Ω	IDC Max A
DLCR664-1R2NB	1.2	N	100KHZ/1V	0.042	2.40
DLCR664-1R8NB	1.8	N	100KHZ/1V	0.045	2.25
DLCR664-2R2NB	2.2	N	100KHZ/1V	0.047	2.10
DLCR664-2R7NB	2.7	N	100KHZ/1V	0.050	2.00
DLCR664-3R3NB	3.3	N	100KHZ/1V	0.062	1.80
DLCR664-4R7NB	4.7	N	100KHZ/1V	0.071	1.47
DLCR664-6R8NB	6.8	N	100KHZ/1V	0.092	1.18
DLCR664-8R2NB	8.2	N	100KHZ/1V	0.105	1.12
DLCR664-100NB	10	M	100KHZ/1V	0.118	1.00
DLCR664-120NB	12	M	100KHZ/1V	0.130	0.96
DLCR664-150NB	15	M	100KHZ/1V	0.180	0.87
DLCR664-180NB	18	M	100KHZ/1V	0.210	0.78
DLCR664-220NB	22	M	100KHZ/1V	0.260	0.72
DLCR664-330NB	33	M	100KHZ/1V	0.330	0.60
DLCR664-390NB	39	M	100KHZ/1V	0.360	0.55
DLCR664-470NB	47	M	100KHZ/1V	0.390	0.50
DLCR664-560NB	56	M	100KHZ/1V	0.540	0.45
DLCR664-680NB	68	M	100KHZ/1V	0.620	0.41
DLCR664-820NB	82	M	100KHZ/1V	0.720	0.37
DLCR664-101NB	100	M	100KHZ/1V	0.880	0.34
DLCR664-121NB	120	M	100KHZ/1V	0.990	0.30
DLCR664-151NB	150	M	100KHZ/1V	1.520	0.27
DLCR664-181NB	180	M	100KHZ/1V	1.700	0.25
DLCR664-221NB	220	M	100KHZ/1V	1.850	0.23
DLCR664-271NB	270	M	100KHZ/1V	2.850	0.21

## Electrical characteristics List

## DLCR875 Series

PART No.	L ( $\mu$ H)	Tolerance	Test Condition	RDC Max. $\Omega$	IDC Max. A
DLCR875-1R2NB	1.2	N	100KHZ/1V	0.018	4.10
DLCR875-1R8NB	1.8	N	100KHZ/1V	0.023	3.75
DLCR875-2R2NB	2.2	N	100KHZ/1V	0.025	3.45
DLCR875-2R7NB	2.7	N	100KHZ/1V	0.026	3.35
DLCR875-3R0NB	3.0	N	100KHZ/1V	0.028	3.25
DLCR875-3R3NB	3.3	N	100KHZ/1V	0.030	3.19
DLCR875-2R7NB	3.9	N	100KHZ/1V	0.031	3.08
DLCR875-4R7NB	4.7	N	100KHZ/1V	0.035	2.92
DLCR875-5R6NB	5.6	N	100KHZ/1V	0.039	2.80
DLCR875-6R8NB	6.8	N	100KHZ/1V	0.043	2.65
DLCR875-8R2NB	8.2	N	100KHZ/1V	0.047	2.55
DLCR875-100MB	10	M	100KHZ/1V	0.050	2.40
DLCR875-120MB	12	M	100KHZ/1V	0.55	2.25
DLCR875-150MB	15	M	100KHZ/1V	0.062	1.95
DLCR875-180MB	18	M	100KHZ/1V	0.072	1.78
DLCR875-220MB	22	M	100KHZ/1V	0.080	1.60
DLCR875-270MB	27	M	100KHZ/1V	0.100	1.40
DLCR875-330MB	33	M	100KHZ/1V	0.140	1.30
DLCR875-390MB	39	M	100KHZ/1V	0.150	1.20
DLCR875-470MB	47	M	100KHZ/1V	0.170	1.10
DLCR875-560MB	56	M	100KHZ/1V	0.190	0.99
DLCR875-680MB	68	M	100KHZ/1V	0.210	0.89
DLCR875-820MB	82	M	100KHZ/1V	0.270	0.81
DLCR875-101MB	100	M	100KHZ/1V	0.320	0.74
DLCR875-121MB	120	M	100KHZ/1V	0.360	0.67
DLCR875-151MB	150	M	100KHZ/1V	0.510	0.60
DLCR875-181MB	180	M	100KHZ/1V	0.570	0.55
DLCR875-221MB	220	M	100KHZ/1V	0.760	0.50
DLCR875-271MB	270	M	100KHZ/1V	0.860	0.45